



# COBRA PRINT

5 COLOUR ROLL-TO-ROLL 330mm PRINT ENGINE



# STREAMLINE LABEL & PACKAGING PRINTING WITH THE THE BEST PRICE-PERFORMANCE RATIO

<b>Processor Speed</b>	1,2 GHz
<b>Memory</b>	2GB
<b>Extended Memory (included)</b>	240Gb SolidState Drive (20Gb reserved)
<b>Connectivity</b>	USB 2.0 (Hi-Speed USB) 10/100/1000 Gbit NIC
<b>Operator Panel</b>	10.9cm Colour Graphic LCD (480x272 dots) Display
<b>Software</b>	COBRA RIP- powered by Fiery DigitalFactory
<b>Printing Method</b>	Digital 5 LED Full-color Electrophotographic Printing Method
<b>Print job handling</b>	printing through COBRA RIP
<b>Print modes</b>	handled by COBRA RIP
<b>Print Resolution</b>	up to 1200x1200 dpi, 600x600 dpi (production mode)
<b>Print Colors</b>	Cyan Magenta Yellow Black White
<b>Media weight</b>	60 to 360gsm
<b>Media Types</b>	Plain Paper, Film, Plain Paper Label, Glossy Paper Label, Film Label, Synthetic paper Label
<b>Media Format</b>	Roll
<b>Media Width</b>	330mm
<b>Media Input Length</b>	600 meters (recommended), 1000 meters (max)
<b>Environment</b>	Operating temperature/humidity: 10°C to 35°C (17°C to 27°C recommended) / 10% to 85% RH (50% to 70% RH recommended)
<b>Power Supply</b>	Single phase 220 to 240VAC, frequency 50Jz +/- 2Hz
<b>Power Consumption</b>	Typical: 1250W; Max: 1600W; Idle: 40W (average); Power Save: <34W; Deep Sleep: <4W; Off Mode: <0.5W
<b>Noise Level</b>	Operating: 57dB(A); Standby: 32dB(A) or less; Power save: Inaudible
<b>Dimenions (HxWxD)</b>	640 x 699 x 625mm
<b>Weight</b>	110.8kg
<b>Warranty</b>	12 months return-to-base
<b>Minimum Print Margin</b>	Right:2.12mm Left:2.12mm



Cobra Printing Technology  
Donaustauer Str 194  
93059 Regensburg  
Germany







# COBRA PRINT

## HIGH FIDELITY COLOUR. OPTIMISED WORKFLOW.

The Cobra 330 print engine comes with the best-of-breed RIP and workflow solution available.

Digital Factory is a completely integrated print as well as print and cut software package, easily extendable and the most user-friendly print production companion on the market. Empowering all digital production projects on and around the Cobra 330 - from start to finish.



Cobra330 Edition





# DIGITAL FACTORY FEATURES A CENTRAL HUB FOR SIMPLIFIED WORKFLOW MANAGEMENT

## VISUAL PRODUCTION MANAGER (VPM)

VPM includes all of the most widely used pre-production, job management tools you need in one single easy to use location.



**Easy Access Multiple Queue Tabs with simultaneous multiple printer support**

**Easy access pre-production tools**

**Job scheduling with detailed file information**

**Job archive**

**Automatic Cut mark placing**

**Contour cutting of complex shapes**

**Step and repeat**

**Optimised job nesting**

Visual print preview

## DIGITAL FACTORY PRINT COBRA 330™ EDITION CAN EASILY BE EXTENDED



**Digital Factory Print and Cut Production**  
Multiple printer/cutter support for higher volume shops.



**Digital Factory Print and Cut**  
Single printer/single cutter support for shops using print and cut workflows.



**Digital Factory Print**  
Single printer support for shops wishing to optimise digital print workflows.

\*Specialty modules can also be added to packages as required. Visit [www.cadlink.com/product/digitalfactory11/](http://www.cadlink.com/product/digitalfactory11/) for details.



# FOR MAXIMUM PERFORMANCE. STREAMLINE AND AUTOMATE THE COBRA 330™ PRODUCTION WORKFLOW.

## SIMPLIFIED FILE PROCESSING



Import virtually any file types (including .pdf)

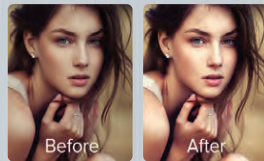


Print direct from design application(s)



Cloud-based as well as network printing

## IN-RIP TOOLS FOR PRE-PRODUCTION



Improve file quality

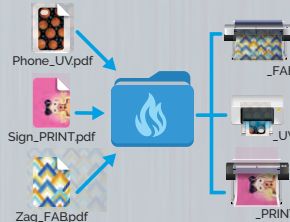


Apply special effects



Production mark-up tools

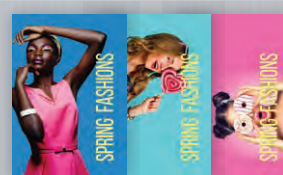
## AUTOMATION, JOB MANAGEMENT AND SCHEDULING



Automatic job sorting



Barcode job processing



Custom templates for automated print layout

## MULTIPLE APPLICATION SUPPORT



Precise, vibrant colour printing on all media types



Print and cut production with fully integrated contour cutting



Specialty print applications

## BENEFIT FROM A PERFECT MATCH: COBRA 330™ & DIGITAL FACTORY\*



### Unmatched colour quality.

State-of-the-art colour management engine ensures precise, vibrant colour printing,



### Cost Savings.

Enhanced automation tools provide instantly measurable labor and consumable savings.



### Unlimited workflow options.

Support virtually all digital print applications.



### Standardise shop software.

Run all printers and cutters with a single software solution

# DIGITAL FACTORY COBRA330™ EDITION FEATURES\*:

## GENERAL RIP FEATURES

- Windows® 11, 10 support (32/64 bit) support
- Optimised RIP processing speeds
- Start to finish .pdf workflow support
- Send jobs directly to queues from design applications (PhotoShop™, Corel™, Illustrator™)
- RIP once, print many
- Preset colour profiles for white, black, and coloured fabrics and other substrates
- Templates support for exact positioning of graphics
- "KnockMeBlackOut", black and grey colour removal
- "KnockMeColorOut", white and other colour removal
- Transparency Opacity
- Send job with underbase directly from design applications
- Automatic trapping in queues
- High Speed printmodes with no quality reduction
- Multiple media color profiles supported
- Lightning fast 64-bit architecture
- Optimised multiple job processing (RIP threading)
- Simplified navigation; Easy queue menu tabs, page view and job properties
- Grid option in job preview window
- Instant access to job information using "mouse-over image"
- Automated TCP/IP port search for easier network printing setup
- Quick job reprints with save job backup (.jpk file) option
- Export queues and printer packages

- Worldwide language support using Unicode
- 4K Display Support

## COLOUR MANAGEMENT TOOLS

- High fidelity, ICC compliant colour management engine (ColorLogic)
- Simple color volume controls
- Complete manual colour curve controls by image detail (shadows, mid-tones, highlights)
- Advanced colour correction tools interface
- Easy colour adjustments
- Colour adjustment wizard for merging ICC rendering intents
- Easy-access to printmodes and printmode overrides

## PRE-PRODUCTION TOOLS

- Visual print preview
- Raw data preview
- Multi-copy with spacing controls (In-Queue feature)
- Cropping controls of image and job (In-Queue feature)
- Rotation controls of image and job (In-Queue feature)
- Mirror, invert image and job (In-Queue feature)
- Scale image and job to any size (In-Queue feature)
- Soft proofing
- No-ink\* option that applies rasterized customisable pattern options (holes, stripes) to graphics. Reduces toner consumption, improves colour fastness and softens final print on garment.
- "No-ink" patterns automatically adjust size of no-ink areas based on image transparency. Greatly improves image quality

- Built-in special effects/filters (distressed, distressed frames, sharpen)
- Updated Supersize filter functionality for improved image resolution
- Job colour replacement
- Simple application of choke to white underbase
- Export template layouts with improved template user interface
- Image duplication interface

## JOB MANAGEMENT AND SCHEDULING TOOLS

- Unique, single window visual interface, one central easy to manage hub for all jobs
- Easy to use queue set-up wizard. Set up production queues quickly and easily
- Auto-scheduling or manual scheduling of jobs
- On-the-fly job prioritisation using simple drag and drop
- Job archiving, history, print status and job log
- Job notes
- Hot folder support
- Gmail support. Send jobs directly to queues using mobile devices via Gmail
- Bar code support for automated production
- Enhanced plug-ins for Corel, Illustrator and Photoshop that send print jobs directly to production queues with automated white underbase created. No cumbersome job preparation required.
- High volume production options available (RIP Server + Multiple machine support, added cost applied)

## FIERY FAMILY OF SOFTWARE PRODUCTS

Discover the benefits of using a single source for all your design and production requirements



[www.cadlink.com](http://www.cadlink.com)

Digital Factory is a registered trademark of Fiery, LLC.

All other trademarks are a property of their respective owners.

[www.cobra-print.com](http://www.cobra-print.com)

DIGITAL FACTORY V11 Cobra 330™ EDITION:

All features and functionality described is subject to change. This datasheet is a work of intent and does not provide any guaranteed contractual warranty.

COMPATIBLE WITH:

Windows 11

Windows 10

SYSTEM REQUIREMENTS:

CPU Intel i5-17 2.6-3.0GHz

Storage 500 SSD (recommended) or HDD

RAM 8-12GB

\* pre-release for LabelExpo 2023 Brussels & subject to change without notice.